

Elysian

Located in the heart of Savannah’s historic district, the Elysian trees provide our school and city’s diverse community with relaxing places to create, collaborate and play. Due to our urban campus structure consisting of restored historic buildings scattered throughout the city, our enchanted trees take root in four of the city’s main squares, which intersect with routes most frequented by students and faculty. This allows for guests from all corners of Savannah to access the experience and provides them with designated outdoor work and gathering spaces on a campus where there are few readily available. Taking the form of oak trees that adopt aspects of their surroundings, Elysian blends seamlessly with the landscape of downtown Savannah, paying homage to its deep-rooted history and culture, as well as its reputation as “The Forest City”. Playing with scale and form, the trees are a whimsical and larger-than-life destination catering to the needs of students, faculty and visitors alike.

The word “Elysian” originates from ancient Greek and is defined as “beautiful or creative; divinely inspired; peaceful and perfect”; an appropriate title for our serene experiences where creativity can thrive.

Team Member	Major/Minor/Concentration	Role/Contribution to project
Participant #1	Themed Entertainment Design	Concept Development, 3D Modeling, Writing
Participant #2	Themed Entertainment Design	Concept Development, Concept Art (Paintings)
Participant #3	Production Design	Team Leader, Logo/Presentation Design, Concept Development, Writing
Participant #4	Themed Entertainment Design	Concept Development, Concept Art (Details)

## Story behind the design

Long ago, seeds of creativity were planted in each of Savannah's main squares. Over time, each seed absorbed the rich arts and culture of the developing city and grew into magical trees that reflected the beauty and history of their surroundings. Though the expanse of this legendary "Forest City" has steadily decreased over time, several of the enchanted trees still thrive.

Inspired by these natural artistic wonders, our school made its roots in the scenic city and joined forces with Savannah to preserve the history and creativity of these magical trees. To this day, the trees still stand tall, providing gathering places for locals and visitors alike. At each square, guests can take a break from their busy schedules, spend time with one another and make lasting memories.

Much like our school's urban campus, Elysian's trees are scattered throughout the city, offering multiple points of accessibility no matter the user's commute route. Whether they are taking a coffee break, working on a group project, or looking for a calming area to catch up on their work, the trees offer serene outdoor spaces where creation, collaboration and play can occur.

## Guest experience

Strategically placed on the most frequented routes of our school's community members, the Elysian trees are convenient diversions where one can escape life's everyday stresses. Upon discovering one of the enchanted trees, guests are welcome to play and explore or simply sit and enjoy their surroundings as they eat lunch or take a phone call. "Historical markers" planted at each square tell the story of Elysian, describe the historic significance of each site and provide a map to guide guests to other tree locations.

Holding a group meeting? Gather 'round the ship-shape conference table at the PiraTree, where you can charge your devices and enjoy complimentary wi-fi. Catching up on homework? Cozy up in a leafy pod at the ForesTree, secluded from distractions while immersed in the beautiful outdoors. Just taking a coffee break? Stroll through the sculptural Tree Hive passage on your walk back to work. Tired after a long day of family activities? Have a seat on the filmstrip swings of the ArtisTree, under colorful paint-shaped lights powered by discreetly designed solar panels hidden in the tree's canopy.

No matter your schedule, Elysian offers a comfortable and relaxing setting to serve any purpose.



# elysiano

THE ENCHANTED TREES OF SAVANNAH



# Welcome to Savannah!

While you're here, be sure to swing by the enchanted trees of Savannah's past, now restored to perfection thanks to a recent partnership with the local college.



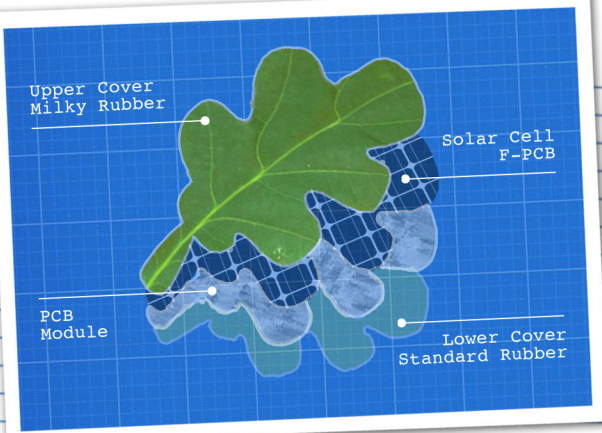
A VISITOR'S GUIDE TO  
*Savannah, GA*



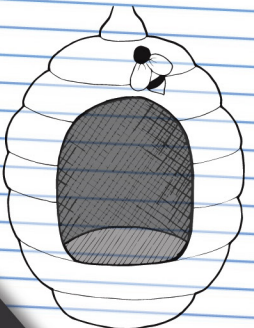
Stationed at each square, historical markers will teach spectators about how the history of the area influenced that tree's growth, and also show other tree locations.



# The Tree Hive



leaf-shaped solar panels blend into the canopy, providing energy to illuminate lights around each tree



swing detail



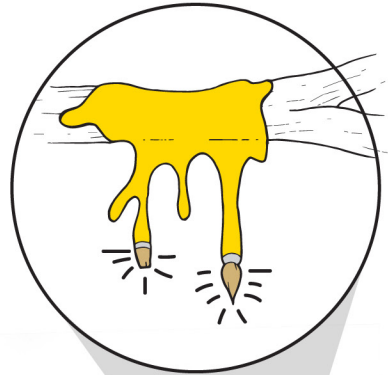
**elysiano**  
 Team BABOD3  
 TeamBABOD3@gmail.com  
 123-456-7890 ext. 44

Conveniently located near our school's Admission Welcome Center, the Tree Hive is an experience that leaves guests with much to "buzz" about. This tree's growth was influenced by Savannah's prominent bee industry, which was also the inspiration behind our school's mascot "Art the Bee." Whether you are starting your campus tour or meeting up with a colleague, the sculptural elements of the Tree Hive make it a visually pleasing and peaceful retreat for all to enjoy.

Our mascot!

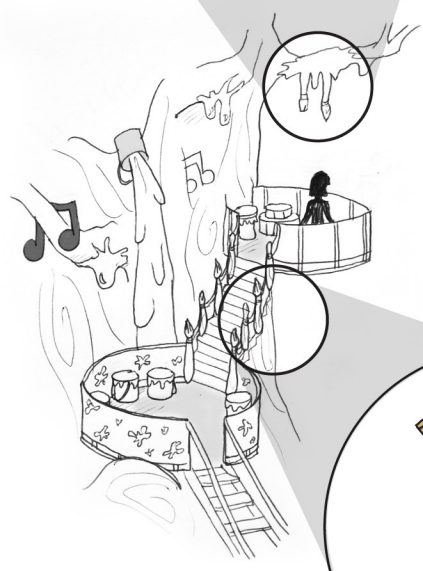
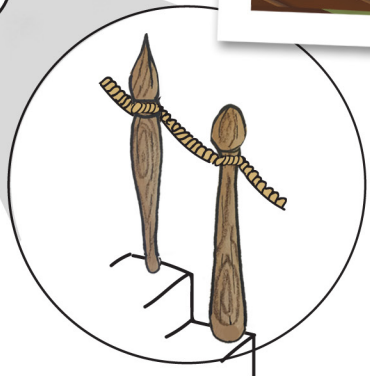


# The ArtisTree



elysian

Just a block away from the campus library and location of the annual Savannah Film Festival, the ArtisTree draws its inspiration from our school and city's rich arts community. The ArtisTree puts a larger-than-life twist on classic artistic mediums, providing a creative break for students who have been inside studying or writing papers, and an outdoor escape for faculty and visitors to soak in the beauty of Savannah.

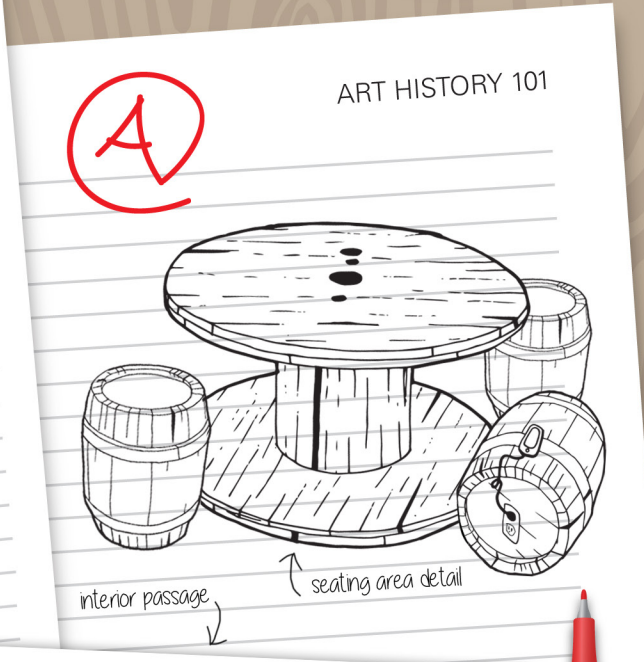


# The PiraTree



PROFESSOR S

B+



ART HISTORY 101

elysiano

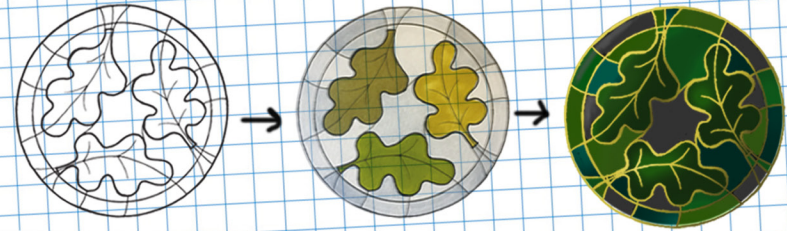
Ohoy, matey! Set sail near Savannah's picturesque waterfront, where the PiraTree beckons you to climb aboard. Influenced by Savannah's port city past and pirate lore, the PiraTree grew from the remnants of a shipwreck and is now an above-ground oasis where play is encouraged. This family-friendly spot is the perfect place to unwind with your out-of-town visitors.



# The ForestTree



Sit back and relax at the ForestTree, located next to our school's Museum of Art and several of its main dormitories. Reflecting the natural and architectural beauty of Savannah, the ForestTree is a charming addition to this scenic area of the city and offers a welcome escape from the confines of both classroom and office.



elysiano

